

The IMS bearing used by Porsche did not have a part number or service interval. The reported failure rate under warranty was as high as 8%, and higher out of warranty.



Failure of the IMS bearing can result in catastrophic engine damage requiring repair or replacement, costing tens of thousands of dollars. Replacement of your Porsche's IMS bearing is a required part of preventative maintenance for your vehicle.

IF YOUR IMS BEARING WAS REPLACED MORE THAN SIX YEARS AGO WITH AN IMS RETROFIT OR OTHER BALL OR ROLLER BEARING KIT, IT IS TIME TO SCHEDULE YOUR BEARING REPLACEMENT.

Late 2005 through 2008 models with the larger, non-serviceable IMS bearing should have the grease seal removed from the original bearing to extend the life of the bearing. No further modifications are recommended or required for these models. [LEARN MORE ->](#)



MAIL-IN REBATES AVAILABLE

when replacing or upgrading any aftermarket IMS bearing with IMS Retrofit or IMS Solution. Rebate delivered as an electronic gift card to use at LNEngineering.com



VISIT [IMSREBATES.COM](https://imsrebates.com) FOR DETAILS

FREE IMS TOOL RENTAL including Rear Main Seal tool

with purchase of any IMS Retrofit
or IMS Solution kit from LNEngineering.com

FIND CERTIFIED INSTALLERS:



[IMSSOLUTION.COM/CERTIFIED-INSTALLERS/](https://imssolution.com/certified-installers/)

[LNENGINEERING.COM](https://lnengineering.com) | 815-472-2939
support@LNEngineering.com



U.S. Patents 8,992,089 | 9,416,697 | 9,687,974 | 9,909,469

**INTERMEDIATE SHAFT BEARINGS
FOR 1997-2008 PORSCHE
BOXSTER, CAYMAN, 911**



THE FIRST. THE ORIGINAL. SINCE 2008.
OVER 40,000 KITS
SOLD AND INSTALLED.



Custom dual-row bearing with ceramic balls.
Billet bearing cap / flange.
Set of microencapsulated bolts.

2 YEARS OR 24,000 MILES WARRANTY.
RECOMMENDED REPLACEMENT EVERY 75K MILES OR 6 YEARS.

THE ONLY PERMANENT SOLUTION FOR THE
INTERMEDIATE SHAFT
BEARING PROBLEM.



Eliminates ball bearing completely.
Easy oil changes with spin-on oil filter.
Pressure-fed plain bearing, like in Mezger engine.

**5 YEARS / UNLIMITED MILES WARRANTY. REPLACEMENT
NOT NECESSARY - DESIGNED FOR THE LIFE OF THE ENGINE.**

THE ONLY IMS ROLLER BEARING KIT
WITH TRUE
THRUST CONTROL.



The only kit on the market that uses Genuine Koyo
bearing with heat treated, 52100 bearing steel thrust
surfaces on both sides to handle thrust load internally.

2 YEARS OR 24,000 MILES WARRANTY.
RECOMMENDED REPLACEMENT EVERY 75K MILES OR 6 YEARS.

1997-2001

DUAL ROW IMS RETROFIT **106-08.4**

Fits 1997-2001 M96 engines* originally
equipped with dual-row bearing.



DUAL ROW IMS SOLUTION **106-08.40**

Fits 1997-2001 M96 engines*. Replaces OE dual
row ball bearing with a pressure fed-plain bearing.



DUAL ROW RS ROLLER KIT **106-08.4R**

Fits 1997-2001 M96 engines*. Integrates a roller
bearing in place of the original dual row ball bearing.



2000-2005

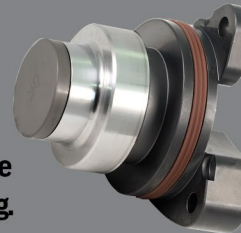
SINGLE ROW PRO IMS RETROFIT **106-08.2.2**

Fits 2000-2005 M96 engines*. Integrates
dual-row bearing in place of the original
single-row.



SINGLE ROW PRO IMS RETROFIT **106-08.20**

Fits 2000-2005 M96 engines*. Replaces OE single
row ball bearing with a pressure-fed plain bearing.



SINGLE ROW RS ROLLER KIT **106-08.2R**

Fits 2000-2005 M96 engines*. Integrates a roller
bearing in place of the original single row ball
bearing.



2006-2008

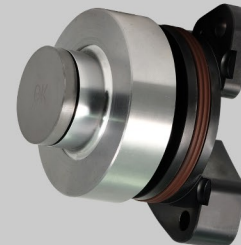
MY 06-08 IMS RETROFIT **106-08.30**

Engine disassembly required. Includes
a special adapter that makes the IMS
bearing serviceable without engine
disassembly in the future.



MY 06-08 IMS RETROFIT **106-08.60**

Engine disassembly required. Replaces the
larger bearing used in MY 2006-2008
with a pressure-fed plain bearing. Future
replacement not necessary.



MY 06-08 RS ROLLER KIT **106-08.30R**

Engine disassembly required. Includes a
special adapter that makes the IMS bearing
serviceable without engine disassembly in
the future.



*1997-1999 engines are equipped with dual-row bearing. 2000-2001 models can have either single- or dual-row bearing. 2002-2005 engines have a single-row bearing. Visit imsretrofit.com for more information.